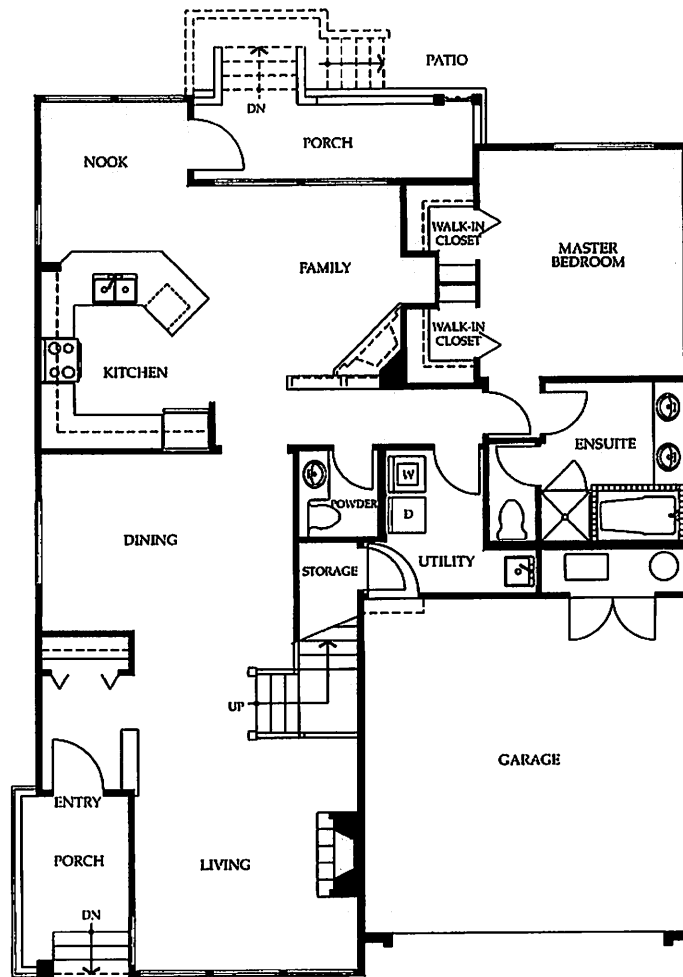




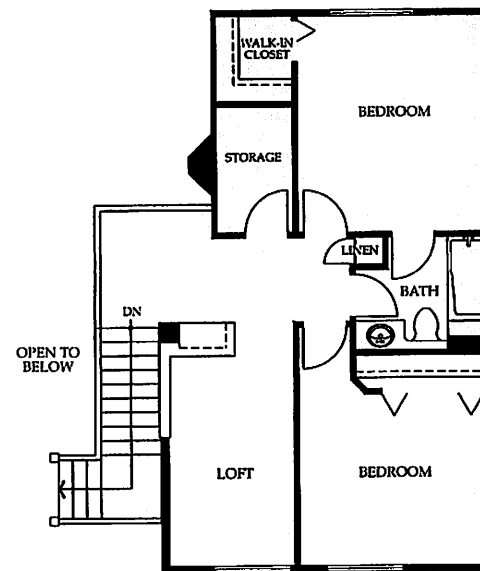
# THE BURLINGTON

Plan B2 - 2,075 sq. ft.

*The spacious sun-filled Burlington home blends traditional style and contemporary flair. A cross-hall plan creates formal dining and living areas, both crowned with dramatic double-height vaulted ceilings. Front and back porches lend old-fashioned warmth, and a cosy family room invites quiet evenings by the fire. The beautifully appointed main-level master bedroom features his and hers closets, and an opulent ensuite with a deep soaker tub and walk-in shower. The bright kitchen is fitted with Shaker cabinetry, Mexican ceramic tile and an eating bar. For extra convenience, the Burlington offers direct access from the garage through a laundry/mud room. The Burlington's upper level includes plenty of flexible space: two full-size bedrooms, bathroom, a large storage area, and a loft area perfect for a home office.*



MAIN FLOOR



UPPER FLOOR