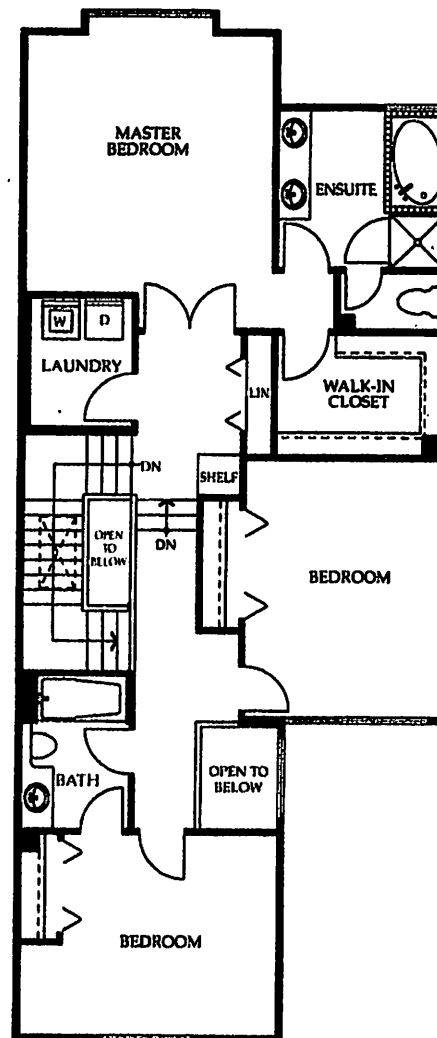


MAIN FLOOR



UPPER FLOOR



THE SCARBOROUGH

Plan C - Approx. 2,061 sq. ft.

The spacious Scarborough home welcomes you into a foyer featuring Italian ceramic tile floors and a sculpture niche, leading straight into the dramatic living and dining rooms crowned by coffered ceilings. Elegant fireplaces with traditional wood mantels bring warmth to both the family room and living room. The gourmet kitchen offers every convenience, including a full-height pantry and halogen accent lighting. An adjoining breakfast nook opens onto a private back patio and yard. Upstairs, the spacious master suite offers a huge walk-in closet and an opulent ensuite with separate water closet area, deep soaker tub and walk-in shower. Guests enjoy privacy in two large bedrooms, one with an ensuite bath.